

Hastings St between Granville Ave and Holland Ave

November 23, 2020 To November 27, 2020



The data presented here is for information purposes only and should not be considered authoritative for construction, geotechnical, engineering, navigational, legal, or other site-specific uses. The information shared is owned by the Transportation Division of the Engineering Department at the District of Saanich. Accuracy is not guaranteed.

Start Date: 23-Nov-20
 Start Time: 20:00
 Station ID: C0032-02

Location 1: Hastings St between Granville Ave and Holland Ave

Note:

DATE:	November 23, 2020		November 24, 2020		November 25, 2020		November 26, 2020		November 27, 2020		WK AVG		WK AVG	HOURLY
	MON		TUE		WED		THURS		FRI		EB	WB	CH 1+2	%
Time:	EB	WB	EB	WB	EB	WB	EB	WB	EB	WB	EB	WB		
12-1 AM			1	2	1	0	3	2			2	1	3	0.2%
1-2 AM			2	1	4	1	3	0			3	1	4	0.2%
2-3 AM			2	0	2	0	2	0			2	0	2	0.1%
3-4 AM			0	1	0	0	0	1			0	1	1	0.0%
4-5 AM			1	0	1	1	0	0			1	0	1	0.1%
5-6 AM			10	3	9	2	12	1			10	2	12	0.8%
6-7 AM			51	7	52	4	57	9			53	7	60	3.9%
7-8 AM			137	21	117	26	116	23			123	23	147	9.5%
8-9 AM			132	41	123	30	131	35			129	35	164	10.6%
9-10 AM			53	29	46	24	40	28			46	27	73	4.8%
10-11 AM			44	25	59	27	60	39			54	30	85	5.5%
11-12 PM			50	36	50	47	44	44			48	42	90	5.9%
12-1 PM			48	42	57	48	49	48			51	46	97	6.3%
1-2 PM			40	55	59	47	42	40			47	47	94	6.1%
2-3 PM			67	61	63	77	56	59			62	66	128	8.3%
3-4 PM			63	109	66	105	82	98			70	104	174	11.3%
4-5 PM			62	102	75	108	56	122			64	111	175	11.3%
5-6 PM			39	60	40	65	41	71			40	65	105	6.8%
6-7 PM			25	23	23	25	21	27			23	25	48	3.1%
7-8 PM			18	20	14	19	17	11			16	17	33	2.1%
8-9 PM	9	13	5	6	9	13	10	14			8	12	20	1.3%
9-10 PM	3	5	7	4	6	9	6	8			6	7	12	0.8%
10-11 PM	1	5	5	8	6	5	3	5			4	6	10	0.6%
11-12 AM	1	3	2	4	1	3	0	5			1	4	5	0.3%
LANES			864	660	883	686	851	690			865	678	1543	100.0%
TOTAL			1524		1569		1541				1550			
	MON		TUE		WED		THURS		FRI		WK AVG			

PEAK HOUR					TOTAL VEHICALS-PEAK PERIODS		2 HOUR PEAK INTERVALS				
MAX. 7 - 9 am PEAK HOUR	164	⇒	10.6%	between 8-9 AM	779	⇒	6 HR TOTAL	2 HR AM (7 - 9 AM)			
MAX. 7 - 11 am PEAK HOUR	164	⇒	10.6%	between 8-9 AM	591	⇒	4 HR TOTAL	VEH / HR	VEH / 2HR	2 HR %	
MAX. 11 am - 1 pm PEAK HOUR	97	⇒	6.3%	between 12-1 PM				7-8 AM	147	311	20.1%
MAX. 11 am - 3 pm PEAK HOUR	128	⇒	8.3%	between 2-3 PM				8-9 AM	164		
MAX. 4 - 6 pm PEAK HOUR	175	⇒	11.3%	between 4-5 PM			24 HOUR FACTORS	2 HR NOON (11 - 1 PM)			
MAX. 3 - 6 pm PEAK HOUR	175	⇒	11.3%	between 4-5 PM	1.98	⇒	6-24 HR FACT.	VEH / HR	VEH / 2HR	2 HR %	
					2.61	⇒	4-24 HR FACT.	11-12 PM	90	188	12.2%
								12-1 PM	97		
								2 HR PM (4 - 6 PM)			
								VEH / HR	VEH / 2HR	2 HR %	
								4-5 PM	175	280	18.2%
								5-6 PM	105		

Hastings St between Granville Ave and Holland Ave

Westbound

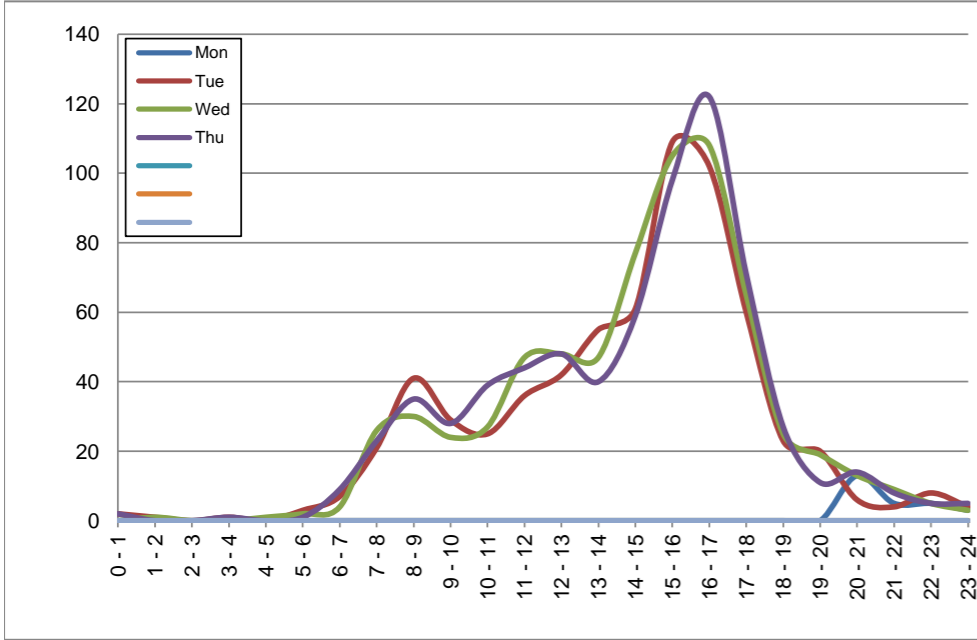
November 23, 2020 to November 26, 2020

Hourly Volumes

Time Period	Mon	Tue	Wed	Thu			
	Nov 23	Nov 24	Nov 25	Nov 26			
0 - 1		2	0	2			
1 - 2		1	1	0			
2 - 3		0	0	0			
3 - 4		1	0	1			
4 - 5		0	1	0			
5 - 6		3	2	1			
6 - 7		7	4	9			
7 - 8		21	26	23			
8 - 9		41	30	35			
9 - 10		29	24	28			
10 - 11		25	27	39			
11 - 12		36	47	44			
12 - 13		42	48	48			
13 - 14		55	47	40			
14 - 15		61	77	59			
15 - 16		109	105	98			
16 - 17		102	108	122			
17 - 18		60	65	71			
18 - 19		23	25	27			
19 - 20		20	19	11			
20 - 21	13	6	13	14			
21 - 22	5	4	9	8			
22 - 23	5	8	5	5			
23 - 24	3	4	3	5			
Day Total		660	686	690			

15-Minute Volumes

Time Start	Mon	Tue	Wed	Thu			
	Nov 23	Nov 24	Nov 25	Nov 26			
0:00		0	0	2			
0:15		0	0	0			
0:30		2	0	0			
0:45		0	0	0			
1:00		1	1	0			
1:15		0	0	0			
1:30		0	0	0			
1:45		0	0	0			
2:00		0	0	0			
2:15		0	0	0			
2:30		0	0	0			
2:45		0	0	0			
3:00		1	0	0			
3:15		0	0	0			
3:30		0	0	0			
3:45		0	0	1			
4:00		0	0	0			
4:15		0	0	0			
4:30		0	1	0			
4:45		0	0	0			
5:00		0	1	0			
5:15		1	0	1			
5:30		2	1	0			
5:45		0	0	0			
6:00		2	0	1			
6:15		1	1	1			
6:30		2	1	3			
6:45		2	2	4			
7:00		2	3	5			
7:15		5	7	3			
7:30		7	6	9			
7:45		7	10	6			
8:00		7	4	9			
8:15		11	12	8			
8:30		14	5	9			
8:45		9	9	9			
9:00		9	5	10			
9:15		4	12	6			
9:30		11	2	5			
9:45		5	5	7			
10:00		10	5	7			
10:15		5	9	9			
10:30		7	3	13			
10:45		3	10	10			
11:00		5	10	10			
11:15		7	7	12			
11:30		8	13	12			
11:45		16	17	10			
12:00			11	16	8		
12:15			4	9	13		
12:30			14	10	18		
12:45			13	13	9		
13:00			15	20	13		
13:15			12	9	10		
13:30			11	7	7		
13:45			17	11	10		
14:00			11	17	11		
14:15			14	18	13		
14:30			8	16	16		
14:45			28	26	19		
15:00			25	30	22		
15:15			24	23	23		
15:30			27	19	29		
15:45			33	33	24		
16:00			22	32	36		
16:15			28	25	31		
16:30			30	20	29		
16:45			22	31	26		
17:00			22	21	26		
17:15			17	26	17		
17:30			16	15	16		
17:45			5	3	12		
18:00			5	8	7		
18:15			9	6	8		
18:30			8	8	8		
18:45			1	3	4		
19:00			6	4	5		
19:15			6	5	3		
19:30			3	4	0		
19:45			5	6	3		
20:00	6	2	5	2			
20:15	5	2	2	5			
20:30	2	2	1	3			
20:45	0	0	5	4			
21:00	1	3	1	0			
21:15	1	1	3	5			
21:30	1	0	2	1			
21:45	2	0	3	2			
22:00	0	1	1	2			
22:15	1	2	1	0			
22:30	3	2	3	3			
22:45	1	3	0	0			
23:00	1	0	1	1			
23:15	2	3	2	2			
23:30	0	1	0	1			
23:45	0	0	0	1			



Site notes:

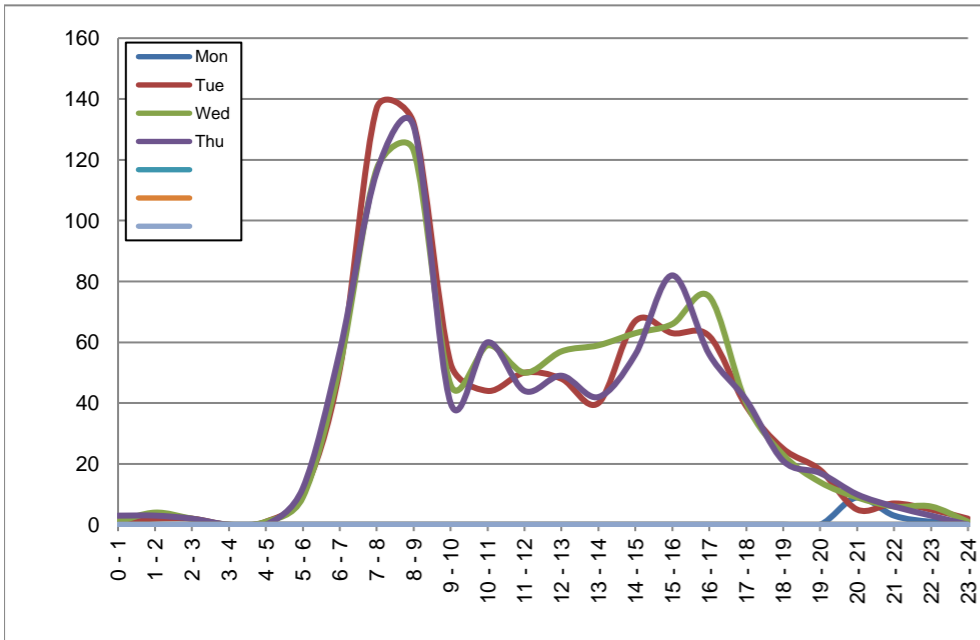
Hastings St between Granville Ave and Holland Ave

Eastbound

November 23, 2020 to November 26, 2020

Hourly Volumes

Time Period	Mon	Tue	Wed	Thu			
	Nov 23	Nov 24	Nov 25	Nov 26			
0 - 1		1	1	3			
1 - 2		2	4	3			
2 - 3		2	2	2			
3 - 4		0	0	0			
4 - 5		1	1	0			
5 - 6		10	9	12			
6 - 7		51	52	57			
7 - 8		137	117	116			
8 - 9		132	123	131			
9 - 10		53	46	40			
10 - 11		44	59	60			
11 - 12		50	50	44			
12 - 13		48	57	49			
13 - 14		40	59	42			
14 - 15		67	63	56			
15 - 16		63	66	82			
16 - 17		62	75	56			
17 - 18		39	40	41			
18 - 19		25	23	21			
19 - 20		18	14	17			
20 - 21	9	5	9	10			
21 - 22	3	7	6	6			
22 - 23	1	5	6	3			
23 - 24	1	2	1	0			
Day Total		864	883	851			



Site notes:

15-Minute Volumes

Time Start	Mon	Tue	Wed	Thu				Time Start	Mon	Tue	Wed	Thu			
	Nov 23	Nov 24	Nov 25	Nov 26					Nov 23	Nov 24	Nov 25	Nov 26			
0:00		1	1	2				12:00		10	19	9			
0:15		0	0	0				12:15		10	9	13			
0:30		0	0	0				12:30		11	12	14			
0:45		0	0	1				12:45		17	17	13			
1:00		1	1	2				13:00		10	15	13			
1:15		0	2	0				13:15		8	14	7			
1:30		1	1	0				13:30		12	13	11			
1:45		0	0	1				13:45		10	17	11			
2:00		0	0	1				14:00		10	18	14			
2:15		0	1	0				14:15		23	10	13			
2:30		0	0	0				14:30		19	20	14			
2:45		2	1	1				14:45		15	15	15			
3:00		0	0	0				15:00		9	17	13			
3:15		0	0	0				15:15		18	10	26			
3:30		0	0	0				15:30		18	21	23			
3:45		0	0	0				15:45		18	18	20			
4:00		0	0	0				16:00		27	19	13			
4:15		0	0	0				16:15		7	20	12			
4:30		1	1	0				16:30		19	17	17			
4:45		0	0	0				16:45		9	19	14			
5:00		0	1	1				17:00		7	12	7			
5:15		2	0	1				17:15		10	8	9			
5:30		2	1	2				17:30		11	13	11			
5:45		6	7	8				17:45		11	7	14			
6:00		11	7	8				18:00		11	7	12			
6:15		8	12	11				18:15		5	8	0			
6:30		12	15	18				18:30		5	8	6			
6:45		20	18	20				18:45		4	0	3			
7:00		20	14	17				19:00		7	5	4			
7:15		45	35	33				19:15		5	2	7			
7:30		30	33	35				19:30		2	5	3			
7:45		42	35	31				19:45		4	2	3			
8:00		40	31	37				20:00	5	3	3	5			
8:15		33	35	37				20:15	0	0	2	1			
8:30		35	36	34				20:30	2	2	4	1			
8:45		24	21	23				20:45	2	0	0	3			
9:00		13	18	14				21:00	1	2	2	1			
9:15		12	9	8				21:15	0	2	1	1			
9:30		18	11	10				21:30	1	0	3	1			
9:45		10	8	8				21:45	1	3	0	3			
10:00		19	14	16				22:00	0	0	1	1			
10:15		10	14	19				22:15	0	3	3	1			
10:30		6	10	12				22:30	1	2	1	1			
10:45		9	21	13				22:45	0	0	1	0			
11:00		12	12	12				23:00	1	0	1	0			
11:15		11	11	8				23:15	0	0	0	0			
11:30		12	13	10				23:30	0	1	0	0			
11:45		15	14	14				23:45	0	1	0	0			

Vehicle Speed Summary

Saanich Engineering Department

Count Id: C0032-02

Filename: Hastings St between Granville Ave and Holland Ave-Nov-2020.xlsm

Location: Hastings St between Granville Ave and Holland Ave

Note:

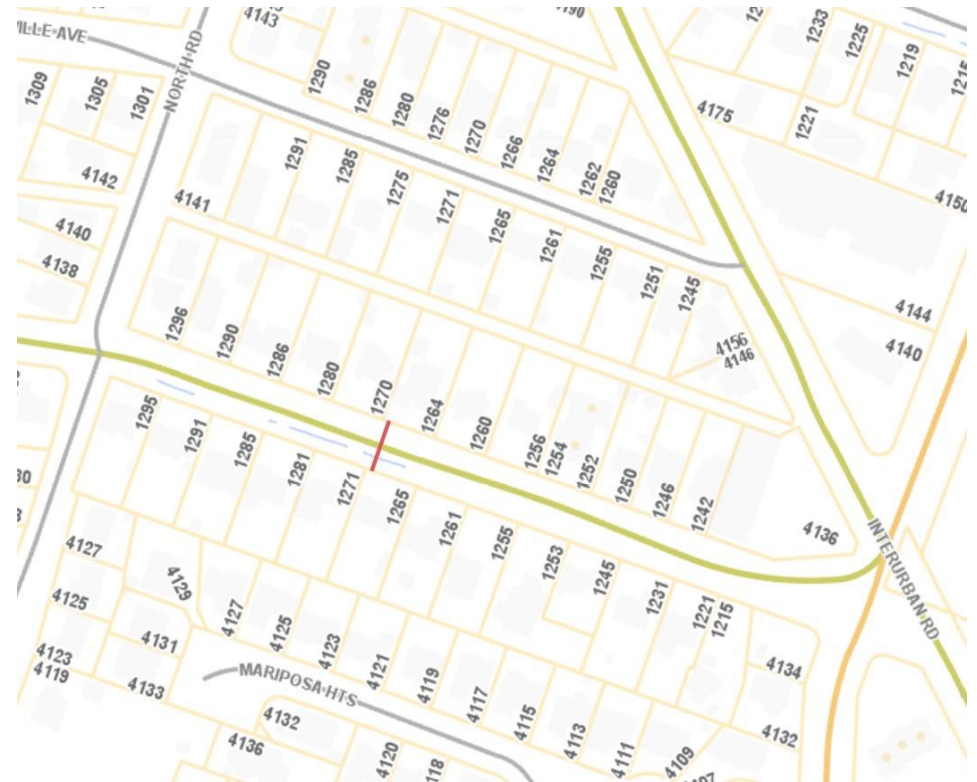
Direction: **East-West**

Dates: **November 23, 2020 To November 27, 2020**

Filtered data

AVG. SPEED	32 mph	52 km/h
50 % SPEED	32 mph	52 km/h
85 % SPEED	38 mph	61 km/h
95 % SPEED	42 mph	67 km/h

Location Map



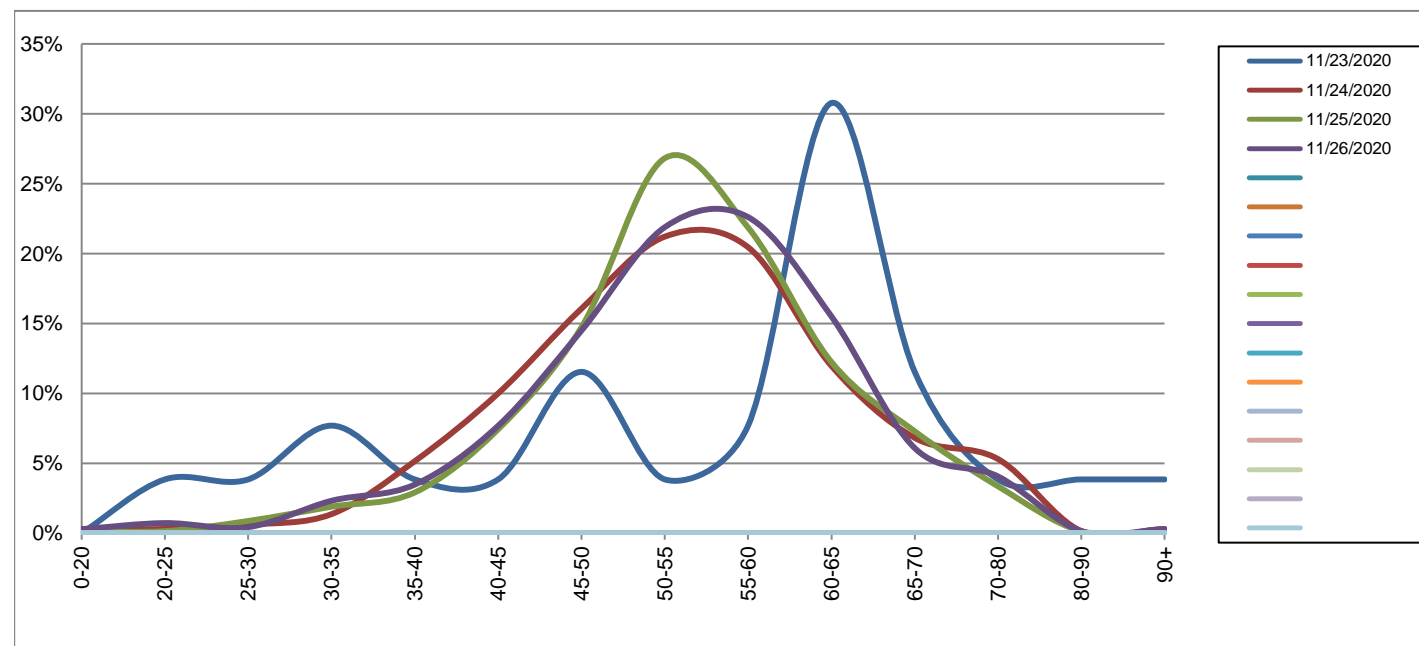
Hastings St between Granville Ave and Holland Ave

Westbound
November 23, 2020 to November 26, 2020

Daily Speed Bin Percentages														Daily Speed Bin Volumes														Total	Avg.	
Bin #	1	2	3	4	5	6	7	8	9	10	11	12	13	14	1	2	3	4	5	6	7	8	9	10	11	12	13	14	Volume	Speed
Bin Speeds	0-20	20-25	25-30	30-35	35-40	40-45	45-50	50-55	55-60	60-65	65-70	70-80	80-90	90+	0-20	20-25	25-30	30-35	35-40	40-45	45-50	50-55	55-60	60-65	65-70	70-80	80-90	90+		
11/23/2020	0.0%	3.8%	3.8%	7.7%	3.8%	3.8%	11.5%	3.8%	7.7%	30.8%	11.5%	3.8%	3.8%	3.8%	0	1	1	2	1	1	3	1	2	8	3	1	1	1	26	56
11/24/2020	0.3%	0.3%	0.6%	1.4%	5.2%	10.0%	16.1%	21.2%	20.5%	12.0%	6.8%	5.3%	0.2%	0.3%	2	2	4	9	34	66	106	140	135	79	45	35	1	2	660	54
11/25/2020	0.1%	0.1%	0.9%	1.9%	2.9%	7.4%	14.7%	26.8%	21.9%	12.2%	7.3%	3.4%	0.1%	0.1%	1	1	6	13	20	51	101	184	150	84	50	23	1	1	686	54
11/26/2020	0.3%	0.7%	0.4%	2.3%	3.5%	7.7%	14.5%	21.9%	22.6%	15.5%	6.1%	4.1%	0.1%	0.3%	2	5	3	16	24	53	100	151	156	107	42	28	1	2	690	54
Total	0.2%	0.4%	0.7%	1.9%	3.8%	8.3%	15.0%	23.1%	21.5%	13.5%	6.8%	4.2%	0.2%	0.3%	5	9	14	40	79	171	310	476	443	278	140	87	4	6	2062	54

Speed Data Summary

Bin #	1	2	3	4	5	6	7	8	9	10	11	12	13	14	Total
Bin Speeds	0-20	20-25	25-30	30-35	35-40	40-45	45-50	50-55	55-60	60-65	65-70	70-80	80-90	90+	
Survey Total	5	9	14	40	79	171	310	476	443	278	140	87	4	6	2062
% Total	0.2%	0.4%	0.7%	1.9%	3.8%	8.3%	15.0%	23.1%	21.5%	13.5%	6.8%	4.2%	0.2%	0.3%	100%
Accumulated %	0.2%	0.7%	1.4%	3.3%	7.1%	15.4%	30.5%	53.5%	75.0%	88.5%	95.3%	99.5%	99.7%	100%	
Inverse Accum. %	99.8%	99.3%	98.6%	96.7%	92.9%	84.6%	69.5%	46.5%	25.0%	11.5%	4.7%	0.5%	0.3%	0.0%	
Average Speed	54 KM/H														



Site notes:

Hastings St between Granville Ave and Holland Ave

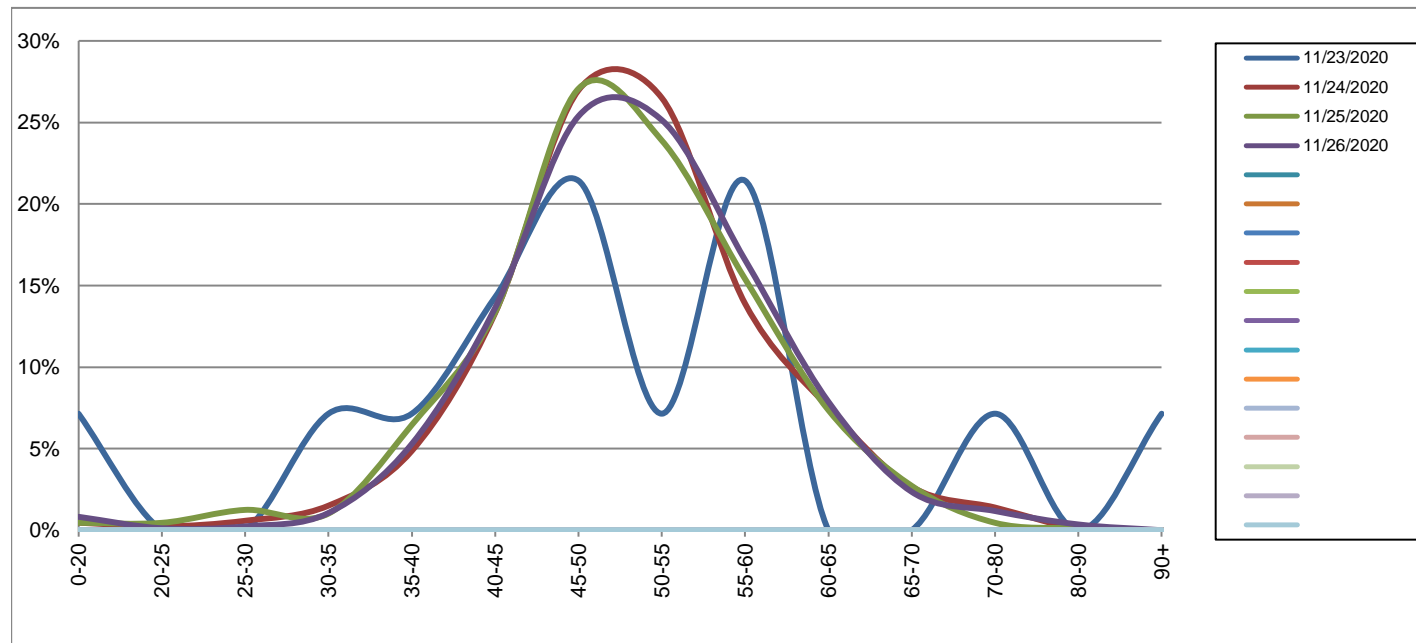
Eastbound

November 23, 2020 to November 26, 2020

Daily Speed Bin Percentages															Daily Speed Bin Volumes														Total	Avg.
Bin #	1	2	3	4	5	6	7	8	9	10	11	12	13	14	1	2	3	4	5	6	7	8	9	10	11	12	13	14	Volume	Speed
Bin Speeds	0-20	20-25	25-30	30-35	35-40	40-45	45-50	50-55	55-60	60-65	65-70	70-80	80-90	90+	0-20	20-25	25-30	30-35	35-40	40-45	45-50	50-55	55-60	60-65	65-70	70-80	80-90	90+		
11/23/2020	7.1%	0.0%	0.0%	7.1%	7.1%	14.3%	21.4%	7.1%	21.4%	0.0%	0.0%	7.1%	0.0%	7.1%	1	0	0	1	1	2	3	1	3	0	0	1	0	1	14	51
11/24/2020	0.5%	0.2%	0.6%	1.5%	4.9%	13.3%	27.0%	26.5%	13.9%	7.5%	2.7%	1.4%	0.1%	0.0%	4	2	5	13	42	115	233	229	120	65	23	12	1	0	864	51
11/25/2020	0.5%	0.5%	1.2%	1.0%	6.5%	13.4%	27.1%	23.9%	15.4%	7.4%	2.7%	0.5%	0.1%	0.0%	4	4	11	9	57	118	239	211	136	65	24	4	1	0	883	50
11/26/2020	0.8%	0.1%	0.2%	1.1%	5.3%	13.6%	25.4%	25.1%	16.6%	7.9%	2.4%	1.2%	0.4%	0.0%	7	1	2	9	45	116	216	214	141	67	20	10	3	0	851	51
Total	0.6%	0.3%	0.7%	1.2%	5.6%	13.4%	26.5%	25.1%	15.3%	7.5%	2.6%	1.0%	0.2%	0.0%	16	7	18	32	145	351	691	655	400	197	67	27	5	1	2612	50

Speed Data Summary

Bin #	1	2	3	4	5	6	7	8	9	10	11	12	13	14	Total
Bin Speeds	0-20	20-25	25-30	30-35	35-40	40-45	45-50	50-55	55-60	60-65	65-70	70-80	80-90	90+	
Survey Total	16	7	18	32	145	351	691	655	400	197	67	27	5	1	2612
% Total	0.6%	0.3%	0.7%	1.2%	5.6%	13.4%	26.5%	25.1%	15.3%	7.5%	2.6%	1.0%	0.2%	0.0%	100%
Accumulated %	0.6%	0.9%	1.6%	2.8%	8.3%	21.8%	48.2%	73.3%	88.6%	96.2%	98.7%	99.8%	100.0%	100%	
Inverse Accum. %	99.4%	99.1%	98.4%	97.2%	91.7%	78.2%	51.8%	26.7%	11.4%	3.8%	1.3%	0.2%	0.0%	0.0%	
Average Speed	50 KM/H														



Site notes:

Hastings St between Granville Ave and Holland Ave

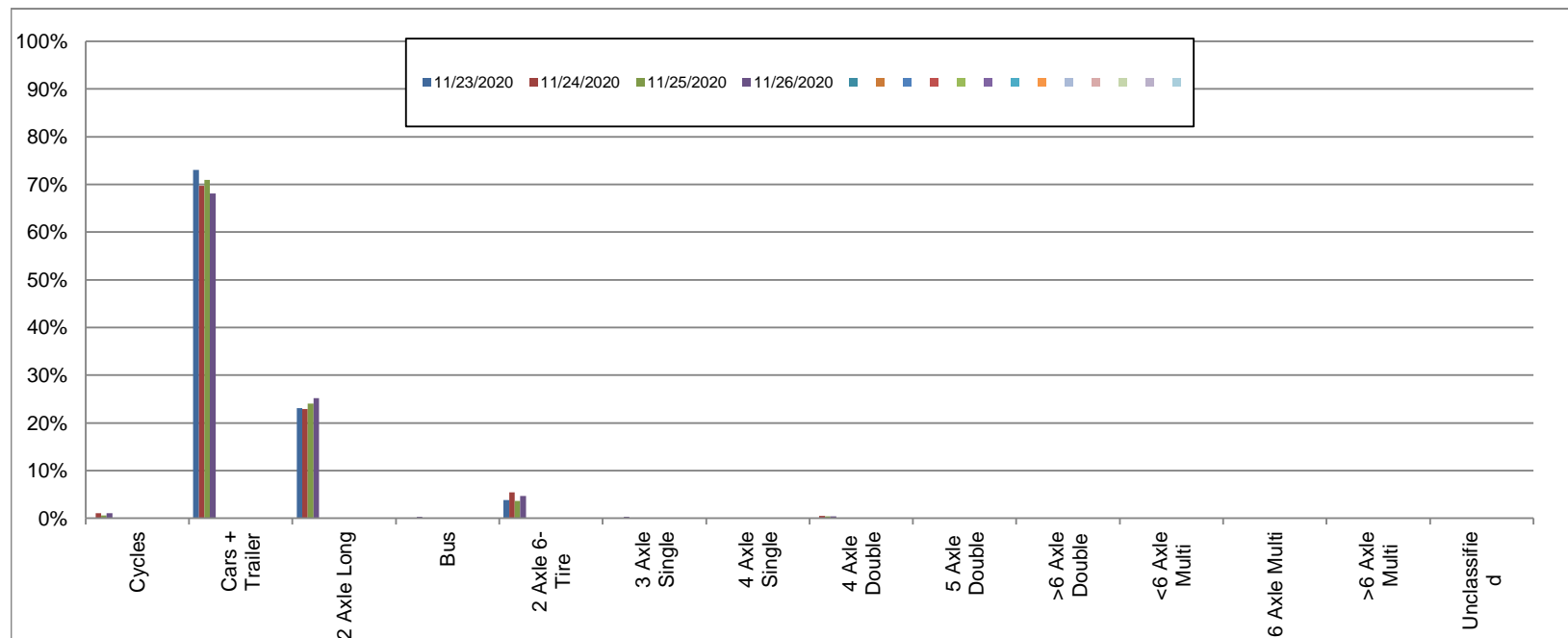
Westbound

November 23, 2020 to November 26, 2020

Daily Class Bin Percentages															Daily Class Bin Volumes											Total Volume				
Bin #	1	2	3	4	5	6	7	8	9	10	11	12	13	14	1	2	3	4	5	6	7	8	9	10	11		12	13	14	
Bin Class	Cycles	Cars + Trailer	2 Axle Long	Bus	2 Axle 6-Tire	3 Axle Single	4 Axle Single	4 Axle Double	5 Axle Double	>6 Axle Double	<6 Axle Multi	6 Axle Multi	>6 Axle Multi	Unclassified	Cycles	Cars + Trailer	2 Axle Long	Bus	2 Axle 6-Tire	3 Axle Single	4 Axle Single	4 Axle Double	5 Axle Double	>6 Axle Double	<6 Axle Multi	6 Axle Multi	>6 Axle Multi	Unclassified		
11/23/2020	0.0%	73.1%	23.1%	0.0%	3.8%	0.0%	0.0%	0.0%	0.0%	0.0%	0.0%	0.0%	0.0%	0.0%	0	19	6	0	1	0	0	0	0	0	0	0	0	0	0	26
11/24/2020	1.1%	69.7%	22.9%	0.2%	5.5%	0.2%	0.0%	0.5%	0.0%	0.0%	0.0%	0.0%	0.0%	0.2%	7	460	151	1	36	1	0	3	0	0	0	0	0	0	1	660
11/25/2020	0.6%	71.0%	24.1%	0.1%	3.6%	0.1%	0.0%	0.4%	0.0%	0.0%	0.0%	0.0%	0.0%	0.0%	4	487	165	1	25	1	0	3	0	0	0	0	0	0	0	686
11/26/2020	1.0%	68.1%	25.2%	0.3%	4.6%	0.3%	0.0%	0.4%	0.0%	0.0%	0.0%	0.0%	0.0%	0.0%	7	470	174	2	32	2	0	3	0	0	0	0	0	0	0	690
Total	0.9%	69.6%	24.1%	0.2%	4.6%	0.2%	0.0%	0.4%	0.0%	0.0%	0.0%	0.0%	0.0%	0.0%	18	1436	496	4	94	4	0	9	0	0	0	0	0	1	2062	

Class Data Summary

Bin #	1	2	3	4	5	6	7	8	9	10	11	12	13	14	Total Volume
Bin Class	Cycles	Cars + Trailer	2 Axle Long	Bus	2 Axle 6-Tire	3 Axle Single	4 Axle Single	4 Axle Double	5 Axle Double	>6 Axle Double	<6 Axle Multi	6 Axle Multi	>6 Axle Multi	Unclassified	
Survey Total	18	1436	496	4	94	4	0	9	0	0	0	0	0	1	2062
% Total	0.9%	69.6%	24.1%	0.2%	4.6%	0.2%	0.0%	0.4%	0.0%	0.0%	0.0%	0.0%	0.0%	0.0%	100%
Accumulated %	0.9%	70.5%	94.6%	94.8%	99.3%	99.5%	99.5%	100.0%	100.0%	100.0%	100.0%	100.0%	100.0%	100.0%	
Inv. Accum. %	99.1%	29.5%	5.4%	5.2%	0.7%	0.5%	0.5%	0.0%	0.0%	0.0%	0.0%	0.0%	0.0%	0.0%	



Classification Descriptions

Bin #	Bin Description
1	Motorcycles
2	Passenger cars, including those with recreational trailers
3	2-axle pick-ups, vans, and RVs, including those with recreational trailers
4	Buses
5	2-axle, 6-tire single units
6	3-axle single units
7	4-axle single units
8	3-axle or 4-axle double unit
9	5-axle double unit
10	6-, 7-, or 8-axle double unit
11	5-axle multiple unit
12	6-axle multiple unit
13	7-or-more-axle multiple unit
14	Vehicles that could not be classified

Site notes:

Hastings St between Granville Ave and Holland Ave

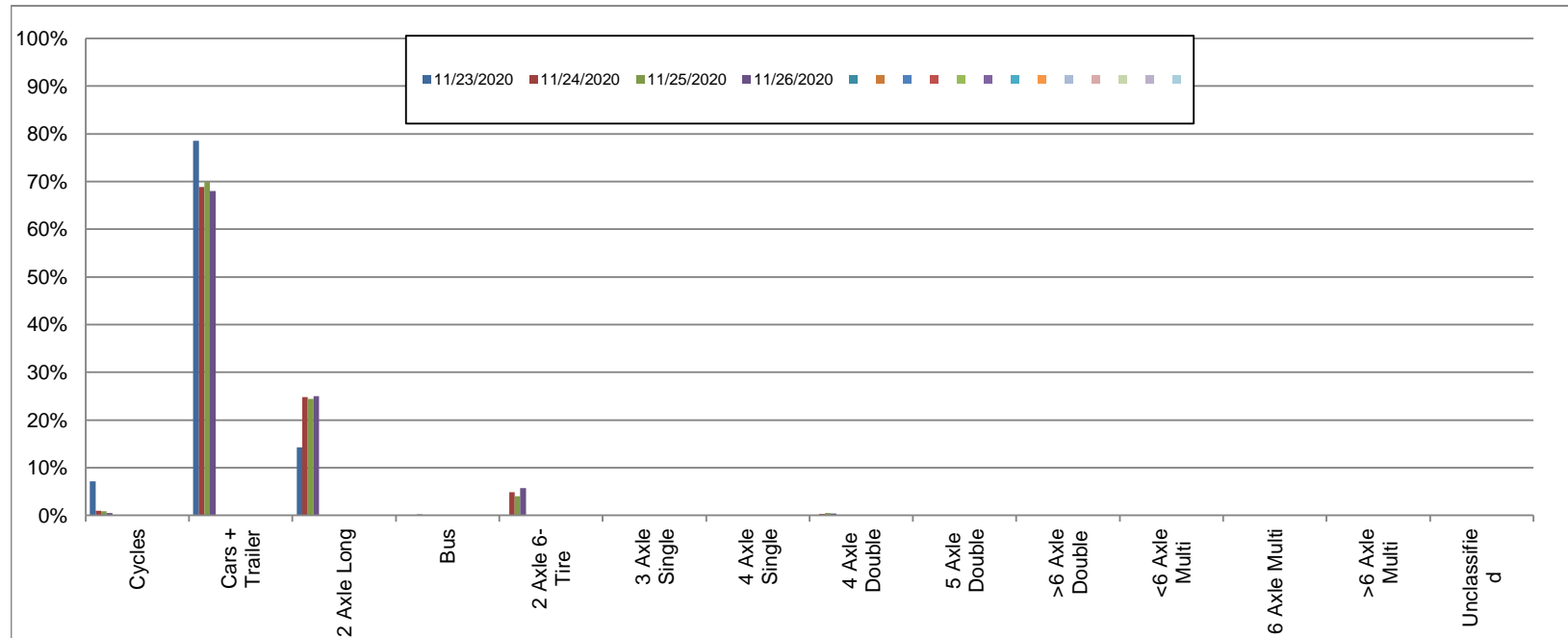
Eastbound

November 23, 2020 to November 26, 2020

Daily Class Bin Percentages															Daily Class Bin Volumes															
Bin #	1	2	3	4	5	6	7	8	9	10	11	12	13	14	1	2	3	4	5	6	7	8	9	10	11	12	13	14	Total Volume	
Bin Class	Cycles	Cars + Trailer	2 Axle Long	Bus	2 Axle 6-Tire	3 Axle Single	4 Axle Single	4 Axle Double	5 Axle Double	>6 Axle Double	<6 Axle Multi	6 Axle Multi	>6 Axle Multi	Unclassified	Cycles	Cars + Trailer	2 Axle Long	Bus	2 Axle 6-Tire	3 Axle Single	4 Axle Single	4 Axle Double	5 Axle Double	>6 Axle Double	<6 Axle Multi	6 Axle Multi	>6 Axle Multi	Unclassified	Total Volume	
11/23/2020	7.1%	78.6%	14.3%	0.0%	0.0%	0.0%	0.0%	0.0%	0.0%	0.0%	0.0%	0.0%	0.0%	0.0%	1	11	2	0	0	0	0	0	0	0	0	0	0	0	14	
11/24/2020	0.9%	68.9%	24.8%	0.1%	4.9%	0.1%	0.0%	0.3%	0.0%	0.0%	0.0%	0.0%	0.0%	0.0%	8	595	214	1	42	1	0	3	0	0	0	0	0	0	864	
11/25/2020	0.9%	69.9%	24.5%	0.0%	4.0%	0.1%	0.0%	0.5%	0.1%	0.0%	0.0%	0.0%	0.0%	0.1%	8	617	216	0	35	1	0	4	1	0	0	0	0	0	1	883
11/26/2020	0.5%	68.0%	25.0%	0.2%	5.8%	0.1%	0.0%	0.4%	0.0%	0.0%	0.0%	0.0%	0.0%	0.0%	4	579	213	2	49	1	0	3	0	0	0	0	0	0	851	
Total	0.8%	69.0%	24.7%	0.1%	4.8%	0.1%	0.0%	0.4%	0.0%	0.0%	0.0%	0.0%	0.0%	0.0%	21	1802	645	3	126	3	0	10	1	0	0	0	0	1	2612	

Class Data Summary

Bin #	1	2	3	4	5	6	7	8	9	10	11	12	13	14	Total Volume
Bin Class	Cycles	Cars + Trailer	2 Axle Long	Bus	2 Axle 6-Tire	3 Axle Single	4 Axle Single	4 Axle Double	5 Axle Double	>6 Axle Double	<6 Axle Multi	6 Axle Multi	>6 Axle Multi	Unclassified	Total Volume
Survey Total	21	1802	645	3	126	3	0	10	1	0	0	0	0	1	2612
% Total	0.8%	69.0%	24.7%	0.1%	4.8%	0.1%	0.0%	0.4%	0.0%	0.0%	0.0%	0.0%	0.0%	0.0%	100%
Accumulated %	0.8%	69.8%	94.5%	94.6%	99.4%	99.5%	99.5%	99.9%	100.0%	100.0%	100.0%	100.0%	100.0%	100.0%	
Inv. Accum. %	99.2%	30.2%	5.5%	5.4%	0.6%	0.5%	0.5%	0.1%	0.0%	0.0%	0.0%	0.0%	0.0%	0.0%	



Classification Descriptions

Bin #	Bin Description
1	Motorcycles
2	Passenger cars, including those with recreational trailers
3	2-axle pick-ups, vans, and RVs, including those with recreational trailers
4	Buses
5	2-axle, 6-tire single units
6	3-axle single units
7	4-axle single units
8	3-axle or 4-axle double unit
9	5-axle double unit
10	6-, 7-, or 8-axle double unit
11	5-axle multiple unit
12	6-axle multiple unit
13	7-or-more-axle multiple unit
14	Vehicles that could not be classified

Site notes: